

How to Disable Common Pop-up Blockers

What is a pop-up blocker?

- LMS Online Courses use pop-ups to display information within browsers.
- Pop-up blockers prevent content from functioning properly.
- All pop-up blockers must be disabled for the LMS Online Courses to work properly.

Note: Many of the home virus protection software (McAfee, Norton, et al.) also have pop-up blockers. Please refer to the user manuals to disable this type of software.


Page	Pop-up Blocker Toolbars
Page 2	Identifying your pop-up blocker toolbar
Page 3	Windows XP Service Pack 2 (SP2) (Internet Explorer 6.0)
Page 4	Yahoo Toolbar
Page 5	Google Toolbar
Page 6	MSN Toolbar
Page 7	AOL Toolbar

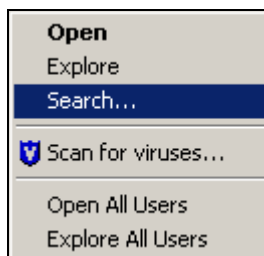
How to Disable Common Pop-up Blockers

Identifying Your Pop-up Blocker Toolbars

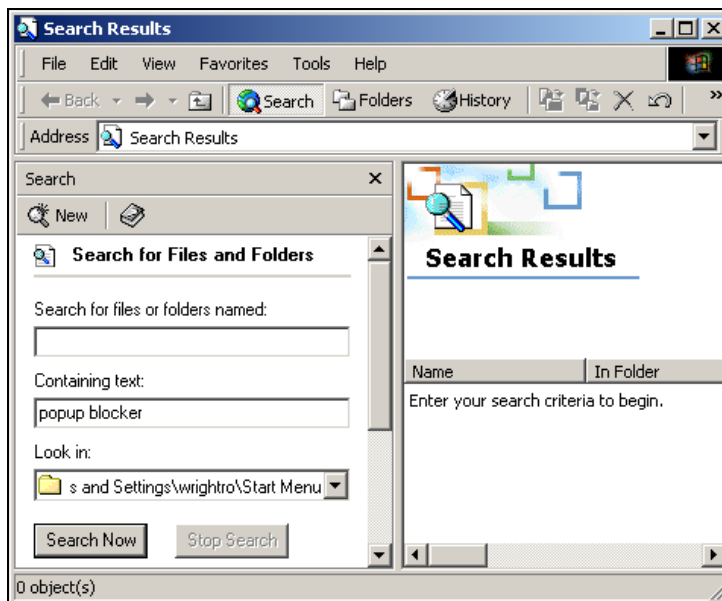
You may have multiple pop-up blockers on your computer.

To determine the toolbars that are installed:

1. Right-click on the  button in the bottom left of the screen.
2. Select **Search** from the menu.



3. Type 'popup blocker' in the *Containing text* field and then click **Search Now**. The search results display the toolbars that are installed in your computer.



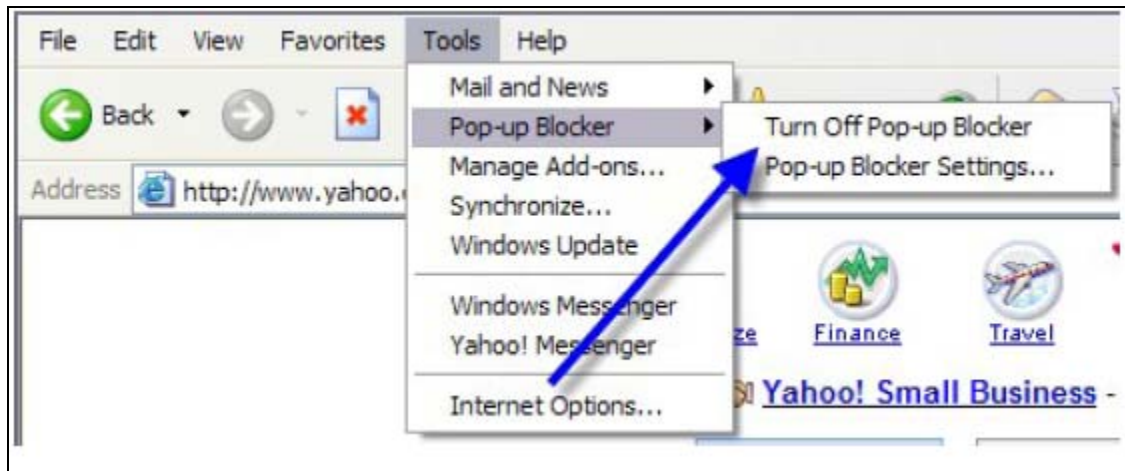
How to Disable Common Pop-up Blockers

Microsoft Windows XP Service Pack 2 (SP2)

With the release of Microsoft's XP Service Pack 2 (SP2), pop-up blocking is now directly integrated into Internet Explorer 6.0. By default pop-up blocking is enabled within SP2.

To Change Pop-up Blocker Settings:

1. Open Internet Explorer.
2. On the **Tools** menu, point to **Pop-up blocker**.



3. Click **Turn Off Pop-up Blocker**.

Note: To re-enable the pop-up blocker repeat steps 1 and 2 and then click **Turn On Pop-up Blocker**.

How to Disable Common Pop-up Blockers

Yahoo Toolbar

Listed below is the Yahoo toolbar as it appears within Internet Explorer. The

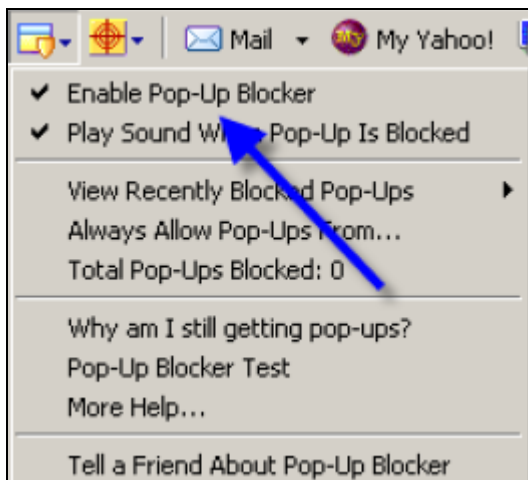


icon is the pop-up blocker.



To Change Pop-up Blocker Settings:

1. Click the pop-up blocker icon to display the following menu.



2. Click **Enable Pop-up Blocker** to uncheck and disable the pop-up blocker.

Once the blocker is disabled the pop-up blocker icon redisplayes as .


Notes:

- To re-enable the pop-up blocker repeat step 1 and then click **Enable Pop-up Blocker**.
- Click **Always Allow Pop-Ups from...** to permanently add an ATLAS application to your list of 'Trusted Sites'.

How to Disable Common Pop-up Blockers

Google Toolbar

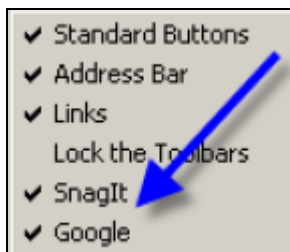
Listed below is the Google toolbar as it appears within Internet Explorer. The

 icon is the pop-up blocker.



To Change Pop-up Blocker Settings:

1. Right-click the pop-up blocker icon to display the following menu.



2. Click **Google** to uncheck and disable the pop-up blocker.

Note: To re-enable the pop-up blocker repeat step 1 and then click **Google**. Changing the icon to reflect that pop-ups are now allowed does not permit ATLAS self-study programs to run, even though it displays the following:



You must disable the entire toolbar.

How to Disable Common Pop-up Blockers

MSN Toolbar

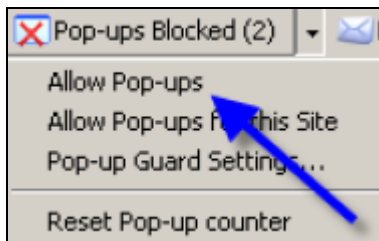
Listed below is the MSN toolbar as it appears within Internet Explorer. The

 icon is the pop-up blocker.



To Change Pop-up Blocker Settings:

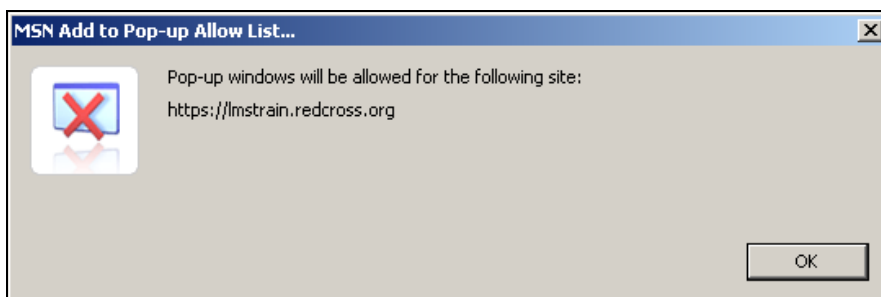
1. To disable Pop-up Blocking, click the pop-up blocker icon to display the following menu.



2. Click **Allow Pop-ups** to disable the pop-up blocker.

Notes:


- To re-enable the pop-up blocker repeat step 1 and then click **Allow Pop-ups**.
- Click **Allow Pop-Ups from this Site** to permanently add an ATLAS application to your list of 'Trusted Sites'. The following window displays:



How to Disable Common Pop-up Blockers

AOL Toolbar

Listed below is the AOL toolbar as it appears within Internet Explorer. The

 icon is the pop-up blocker.



To Change Pop-up Blocker Settings:

1. To disable pop-up blocking, click the pop-up blocker icon to display the following.



Note: To re-enable the pop-up blocker click the icon again.